

Clarke®

air



150L VERTICAL AIR COMPRESSOR MODEL NO: BOXER 18/150V

PART NO: 2245319

OPERATION & MAINTENANCE INSTRUCTIONS



ORIGINAL INSTRUCTIONS

GC0625

INTRODUCTION

Thank you for purchasing this CLARKE Air Compressor.

Before attempting to operate the machine, it is essential that you read this manual thoroughly and follow all instructions given. This will ensure the safety of yourself and others and you can look forward to the product giving you long and satisfactory service.

Before using your compressor it is in your own interest to read and pay attention to the following safety rules on the following page.

GUARANTEE

This CLARKE product is guaranteed against faulty manufacture for a period of 12 months from the date of purchase. Please keep your receipt as proof of purchase.

This guarantee is invalid if the product is found to have been abused or tampered with in any way or not used for the purpose for which it was intended.

Faulty goods should be returned to their place of purchase, no product can be returned to us without prior permission.

This guarantee does not effect your statutory rights.

ENVIRONMENTAL RECYCLING POLICY



By purchasing this product, the customer is taking on the obligation to deal with its safe disposal in accordance with the Waste Electrical and Electronic Equipment (WEEE) regulations.

■ In effect, this means that this product must not be disposed of with general household waste but according to the laws governing Waste Electrical and Electronic Equipment (WEEE) at a recognised disposal facility.

If disposing of this product or any damaged components, do not dispose of with general waste. This product contains valuable raw materials. Metal products should be taken to your local civic amenity site for recycling of metal products.

SAFETY PRECAUTIONS

1. Compressed air is dangerous. **DO NOT** point a jet of air at persons or animals or discharge compressed air against the skin.
2. **DO NOT** operate your compressor with the guard removed.
3. Repairs must only be carried out by a qualified engineer. If problems occur, contact your CLARKE dealer.
4. Before carrying out any maintenance make sure that the pressure is released from the air reservoir and that the compressor is disconnected from the power supply.
5. **DO NOT** leave pressure in the receiver overnight or when transporting.
6. **DO NOT** adjust or tamper with the safety valves. The maximum pressure is factory set, and clearly marked on the compressor.
7. **DO NOT** operate in wet or damp conditions. Keep the compressor dry at all times. Similarly, clean air will allow the compressor to work efficiently. **DO NOT** use in dusty or otherwise dirty locations.
8. Some of the metal parts can become quite hot during operation. **DO NOT** touch/remove these until the compressor has cooled down.
9. When spraying flammable materials e.g. cellulose paint, ensure that there is sufficient airflow and keep clear of any source of ignition.
10. Before spraying any material always consult paint manufacturers instructions for safety and use.
11. Protect yourself. Goggles will protect your eyes from flying particles. Face masks will protect you against paint spray and fumes.
12. **DO NOT** apply strain to electrical cables and make sure that air hoses are not kinked or wrapped around the compressor.
13. When disconnecting air hoses or other equipment from your compressor, make sure that the air supply is turned off at the outlet and vent all pressurised air from within the reservoir and other equipment attached to it.
14. Make sure that children and animals are kept well away from the compressor and any equipment attached to it.
15. Make sure that all individuals using the compressor have had any necessary training and have read and fully understand these operating instructions.
16. Make sure that any equipment or tool used in conjunction with your compressor, has a safe working pressure exceeding that of the compressor.
17. Be careful when transporting the compressor to prevent tipping over.
18. Permanently installed systems must be installed by a competent engineer.
19. These compressors produce noise levels in excess of 70dB(A). Persons working near the compressor must be supplied with ear protection.

SAFETY SYMBOLS

	Read this instruction booklet carefully before positioning, operating or adjusting the compressor.
	Risk of electric shock. The compressor must be disconnected from the mains supply before removing any covers. DO NOT use in a damp environment.
	Risk of accidental start-up. The compressor could start automatically in the event of a power cut and subsequent reset.
	This compressor contains surfaces which may reach a high temperature during operation. NEVER operate with the motor housing removed.
	Wear safety goggles when using this compressor
	Wear ear protectors when using this compressor
 L_{WA} 97 dB	This compressor produces a high sound level during operation.

INSTALLATION

Before installing your compressor, confirm that its output will be sufficient for the airline equipment to be used. We recommend the following:

1. A firm, level site and the use of floor mountings with anti-vibration pads. (Do not bolt the machine directly to the floor).
2. A dust and damp free environment.
3. Adequate ventilation for:
 - Air intake to the compressor
 - Cooling for the compressor and its electric motor.
4. Sufficient access for servicing. (A minimum clearance of 500mm must be allowed around the machine).
5. The power cable must be adequate to carry the starting and running load of the electric motor. This is particularly relevant if the compressor is some distance from the source of supply.
6. Electrical installations should be completed by a qualified electrician.

ELECTRICAL CONNECTIONS



WARNING: READ THESE ELECTRICAL SAFETY INSTRUCTIONS THOROUGHLY BEFORE CONNECTING THE PRODUCT TO THE MAINS SUPPLY.

This compressor requires a 32A plug and connection to a MCB Type C meeting the requirements of BS EN 60309 and having a rated capacity of greater than 32 Amps.

A standard 13 Amp (BS1363) plug must NOT be used.

WARNING: THIS APPLIANCE MUST BE EARTHED.

IMPORTANT: The wires in this mains lead are coloured in accordance with the following code:

GREEN AND YELLOW - EARTH (E)

BLUE - NEUTRAL (N)

BROWN - LIVE (L)

As the colours of the flexible cable of this appliance may not correspond with the coloured markings identifying terminals, proceed as follows:

- Connect GREEN AND YELLOW coloured cable to terminal marked "E" or Earth Symbol or coloured Green and Yellow.
- Connect BROWN cable to terminal marked 'L' or coloured Red.
- Connect BLUE cable to terminal marked "N" or coloured Black.

BEFORE USE



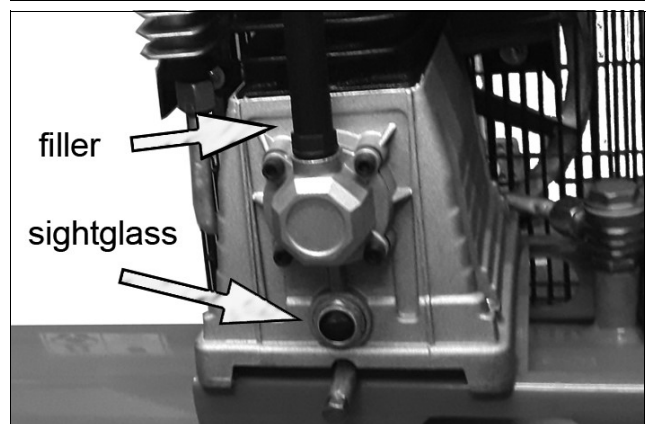
CAUTION: TO PREVENT INJURY, GET ASSISTANCE WHEN LIFTING OR MOVING THIS COMPRESSOR.

Before connecting your compressor to the power supply, check that the supply voltage matches the voltage shown on the data label.

- Set the ON/OFF switch to the OFF position (pushed down).

CHECKING THE OIL LEVEL

1. Ensure the oil level is showing at the correct level through the sight-glass.
2. If not top up after unscrewing the filler plug.
 - Only use ISO100 (SAE30) compressor oil, available from your CLARKE dealer Part No. 3050796.



OPERATION

If the compressor has not been used for more than 24 hours, open the drain valve (on the bottom of the reservoir) and drain any condensate which has collected. See page 10.

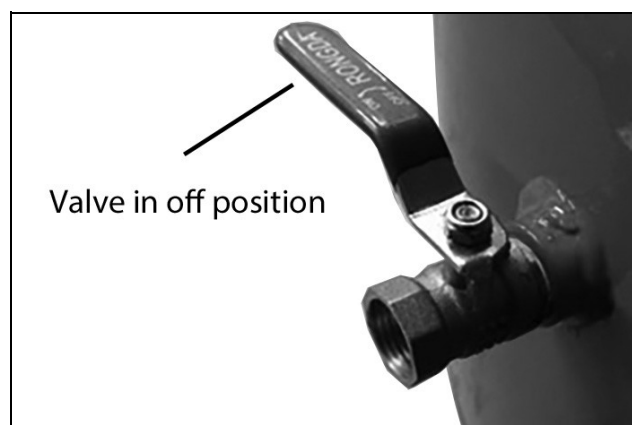
ATTACHING AIR TOOLS



WARNING: BEFORE CONNECTING AIR TOOLS, MAKE SURE THAT YOU READ THE INSTRUCTIONS SUPPLIED WITH THE TOOL. ALSO ENSURE THAT THE TOOL IS SUITABLE FOR USE WITH THE COMPRESSOR AND HOSE SPECIFICATIONS.

1. Fit the supplied adaptor to the compressor and attach the air hose to the tap.
2. Attach the air tool to the other end of the air hose.
3. Turn the tap handle to the open position.

NOTE: The tap is shown without the air hose fitted for clarity.



TURNING THE COMPRESSOR ON

1. Plug the compressor into the power supply.
2. Lift the On/Off button.
 - The compressor will operate until the reservoir is fully pressurised. It will then shut down.
 - The compressor will start up again when the pressure in the reservoir decreases.

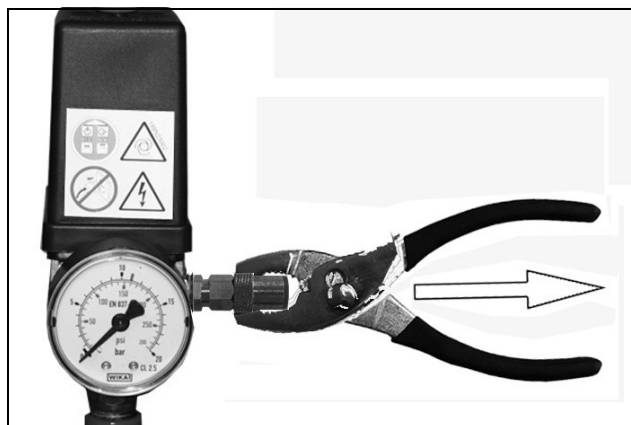
CHECKING THE SAFETY VALVE



WARNING: DO NOT REMOVE OR TRY TO ADJUST THE SAFETY VALVE.

To make sure that the safety valve works correctly.

1. Unscrew and pull the knurled part of the safety valve.
 - Air will be released when you pull hard on the valve and stop when released.
2. If the valve does not operate in this way, do not use the compressor. The compressor must be repaired by a qualified service agent.
3. Once tested, screw the knurled part back in.



REMOVING TOOLS FROM THE AIR HOSE

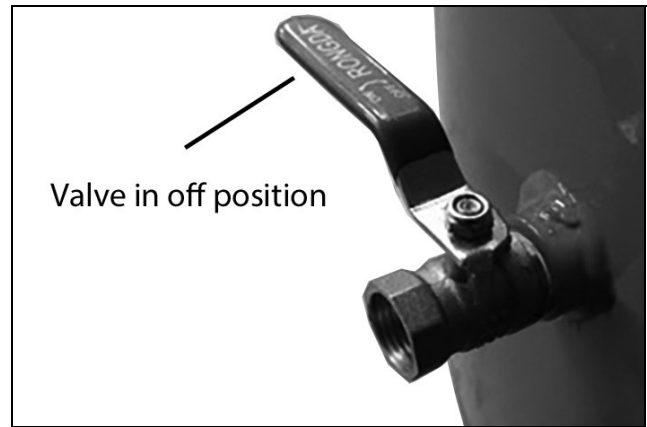


WARNING: ALWAYS SET THE PRESSURE REGULATOR TO ZERO BEFORE YOU REMOVE OR REPLACE A TOOL.

1. Push down on the On/Off button to stop the compressor.



2. Turn the tap handle to the closed position.
3. Operate the tool to depressurize the air hose.
4. Disconnect the tool from the hose.



TURNING THE COMPRESSOR OFF

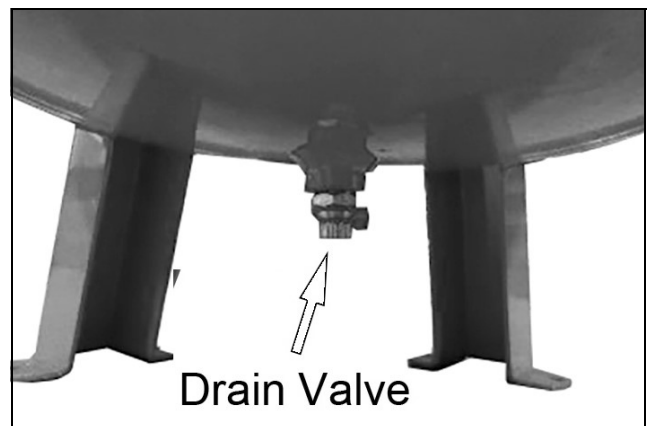
1. Follow steps 1-3 in "Removing Tools From The Air Hose" above.
2. Disconnect the compressor from the power supply.
3. Slowly open the tap to de-pressurize the reservoir.
 - You will hear a hissing sound as the reservoir de-pressurizes.
4. Do not leave the compressor unattended if the reservoir is pressurised.

DRAINING THE RESERVOIR



CAUTION: YOU MUST DRAIN THE RESERVOIR AFTER EACH DAYS USE AND BEFORE YOU PUT YOUR COMPRESSOR INTO STORAGE.

1. Turn the compressor off and disconnect from the power supply.
2. Put a container below the drain valve to collect the condensate.
 - The drain valve is located on the bottom of the reservoir
3. Open the drain valve slowly.
 - Condensation will drain from the reservoir.
4. Close the drain valve when the reservoir has fully drained.



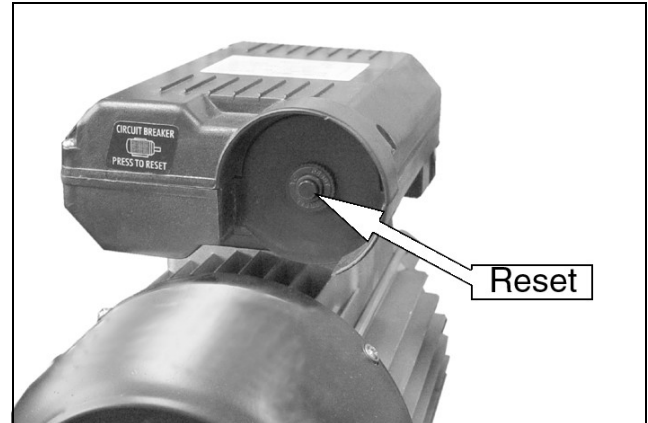
USING THE OVERLOAD RESET BUTTON

The electric motor is fitted with an automatic overload detector which will stop the motor if an overload is detected.

If this happens;

1. SWITCH OFF THE MACHINE (Push the knob down or turn the pressure switch).
2. Allow the compressor to cool down for 5-10 minutes.
3. Press the Reset button shown on the right.
4. Switch on the pressure switch (lift the knob or twist switch).

If the overload trips repeatedly it may indicate a fault with the compressor. In this case you should contact the Clarke service department.



MAINTENANCE



WARNING: MAKE SURE THAT THE COMPRESSOR IS DISCONNECTED FROM THE ELECTRICAL SUPPLY BEFORE CARRYING OUT ANY MAINTENANCE

DRAIN THE RESERVOIR

After use, always open the drain valve to make sure that any condensate is drained off.

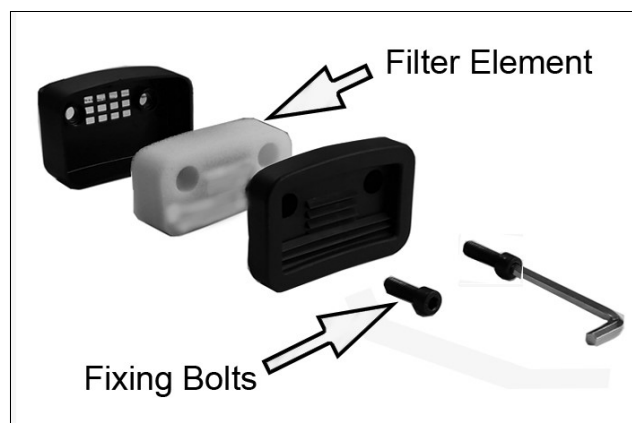
CHECK OIL

Ensure the oil level is between the min and max marks on the dipstick. See "Checking the Oil level" on page 6 and top-up if necessary - (use CLARKE ISO100 (SAE30) compressor oil, available from your local CLARKE dealer).

CLEANING THE AIR FILTER

The air filter must be examined monthly or more often in dusty conditions.

1. Remove the securing bolt with a 7/32" hex key and pull the filter from the engine.
2. Remove the filter element and clean the filter using a soft brush.
 - If necessary, the filter can be carefully cleaned in warm soapy water.
 - Rinse and let the filter dry completely before refitting.
 - If the filter or filter element is damaged you must replace it.
3. Reassemble the filter and refit it to the compressor.



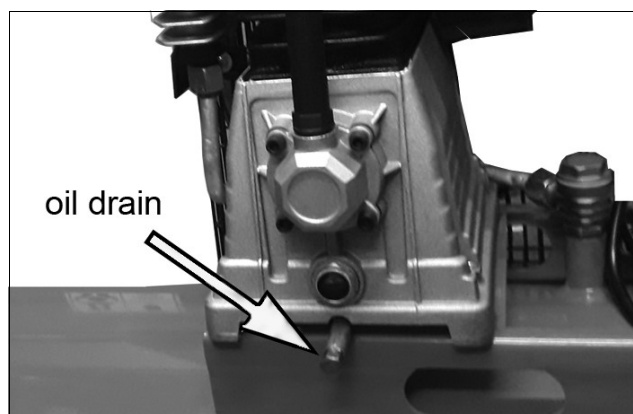
REPLACING THE OIL

After the first 100 hours use, replace the oil using CLARKE ISO100 (SAE30) compressor oil. Thereafter, replace the oil after every 500 hours of operation or every 6 months.

To empty the oil from the machine remove the oil drain plug from the crankcase.

One of the most damaging sources of environmental pollution is oil products.

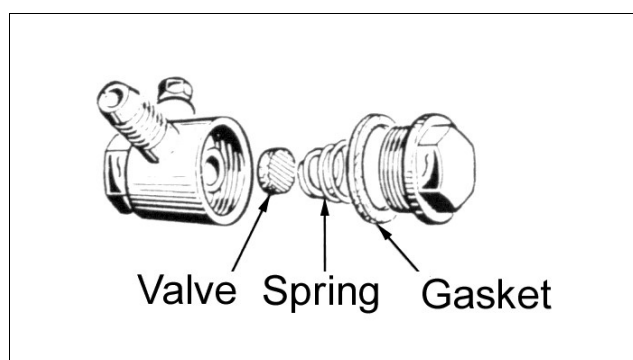
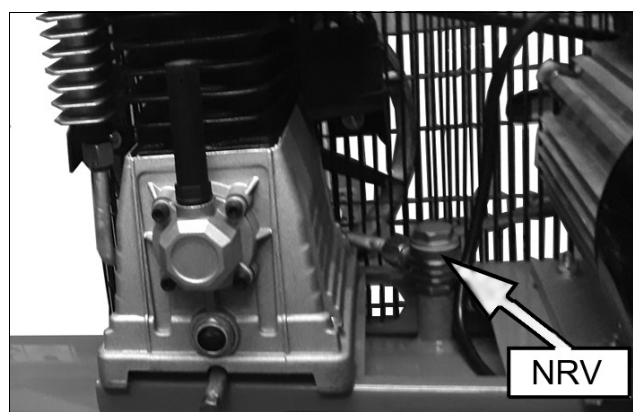
Never throw away used hydraulic oil with domestic refuse or flush it down a sink or drain. Collect any hydraulic oil in a leak proof container and take it to your local waste disposal site.



CHECKING THE NON-RETURN VALVE

If the reservoir pressure decreases for no apparent reason it is possible that the non-return valve is leaking. To check this:

1. Make sure that the reservoir is not under pressure and the compressor is switched OFF.
2. Examine the non-return valve, and replace the gasket and valve if necessary.

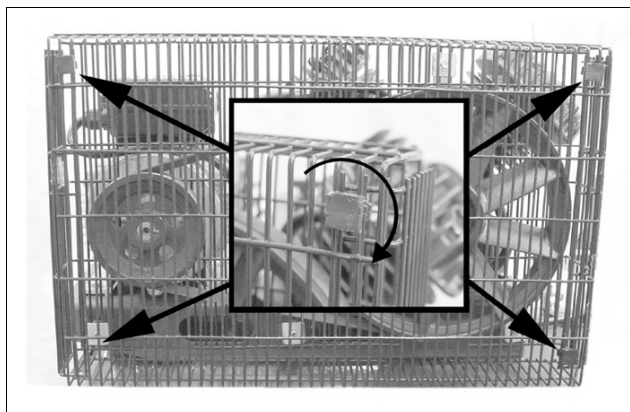


REPLACING THE DRIVE BELT

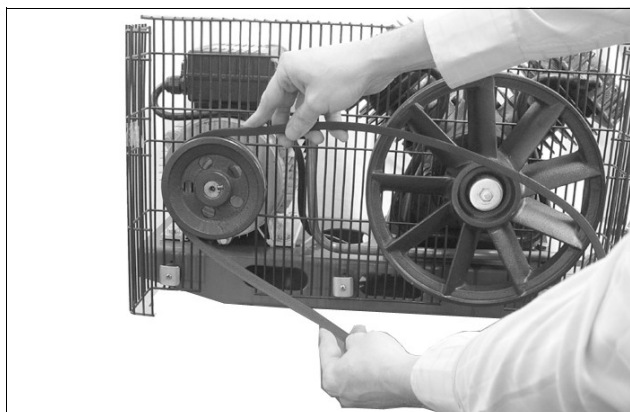


WARNING: MAKE SURE THAT THE COMPRESSOR IS DISCONNECTED FROM THE ELECTRICAL SUPPLY BEFORE REPLACING THE DRIVE BELT.

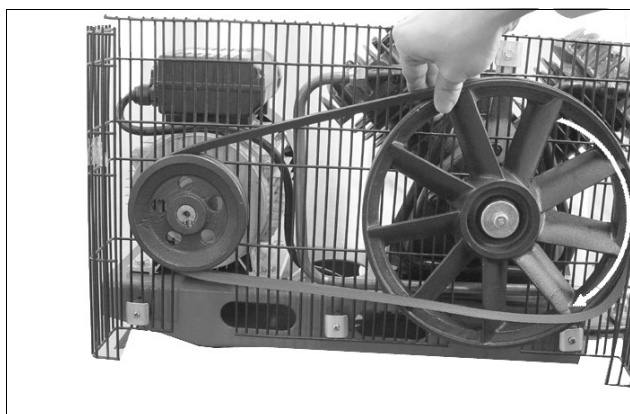
1. Rotate the clips on the front of the safety cage.
2. Remove the front of the cage and take out the worn or broken drive belt.



3. Place the new drive belt over the small wheel.



4. Position part of the drive belt over the large belt wheel as shown.
5. Rotate the large belt wheel by hand in a clockwise direction whilst guiding the belt on to it.
 - Take care to avoid trapping your fingers between the wheel and belt.
6. Replace the cage and secure before use.



WARNING: NEVER USE THE COMPRESSOR WITH THE GUARD REMOVED.

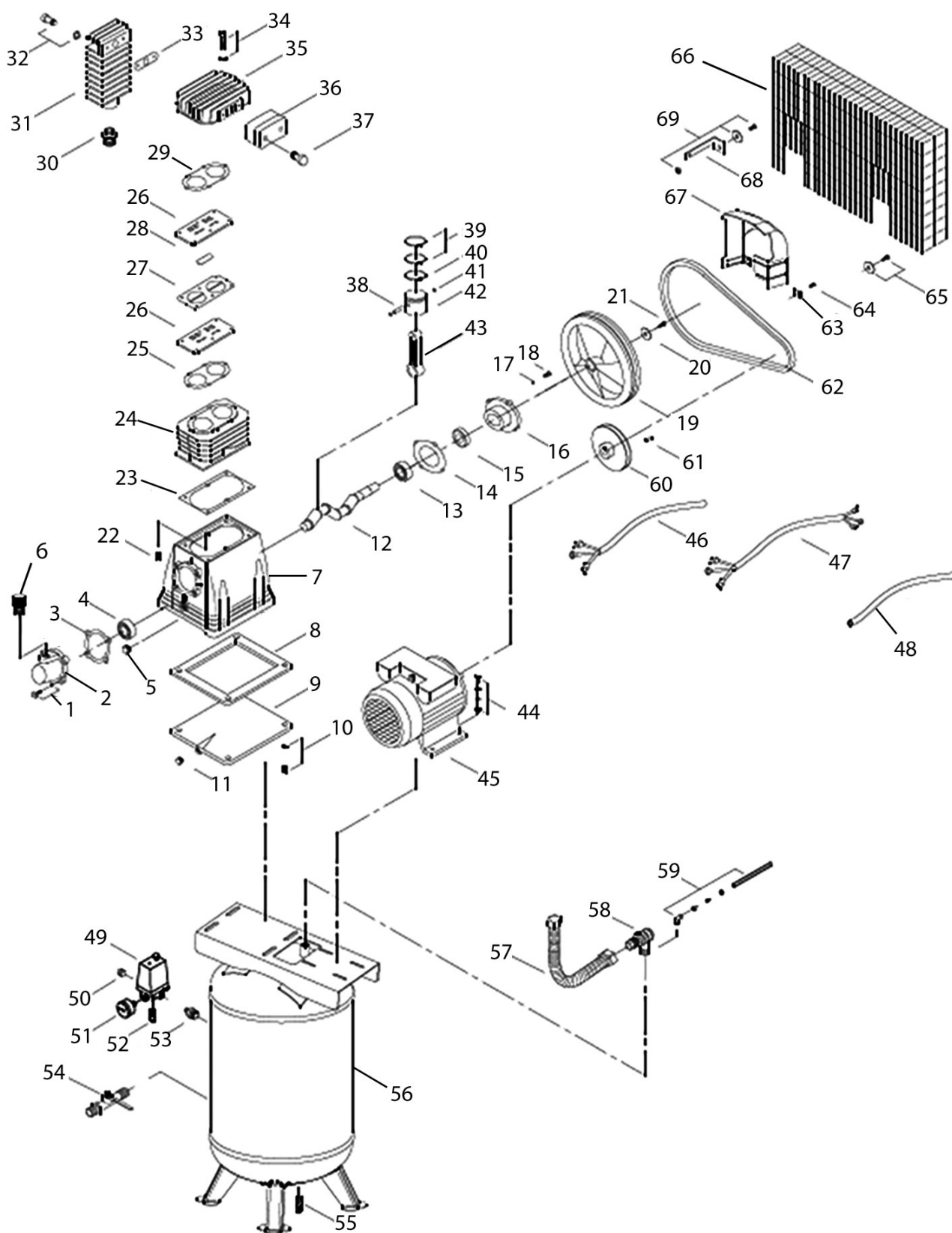
TROUBLESHOOTING



CAUTION: DO NOT TRY TO REPAIR OR ADJUST IF YOU ARE UNCERTAIN. IF YOU HAVE ANY QUERIES CONTACT YOUR CLARKE DEALER.

PROBLEM	PROBABLE CAUSE	REMEDY
The compressor has stopped and does not start.	Bad electrical connections.	1. Check electrical connections. 2. Clean and tighten if necessary.
	Overload cutout switch has tripped.	1. Switch off and wait approx 5 minutes. 2. Press the reset button and switch on again.
	Motor windings burnt out.	1. Contact your CLARKE dealer for a replacement motor.
The compressor does not reach the set pressure and overheats easily.	Compressor head gasket blown or valve broken.	1. Return the machine to your nearest service agent.
Compressor does not start.	The reservoir has already fully pressurised.	1. Open the drain valve to expel air. The compressor should start again when the pressure reduces.
Air leaking from the non-return valve when the compressor is not running.	Faulty non-return valve.	1. Fully drain the receiver of air. 2. Remove the valve end plug. 3. Carefully clean the valve seat and the gasket. 4. Reassemble.
Air pressure from the regulator will not adjust.	The diaphragm within the regulator body is broken.	1. Replace the regulator
The compressor is very noisy and makes metallic knocking sound	Compressor damaged and needs overhaul.	1. Return the machine to your nearest CLARKE dealer.

COMPONENT PARTS



COMPONENT PARTS LIST

NO	DESCRIPTION
1	Screw & Spring Washer
2	Front Cover
3	Front Cover Gasket
4	Ball Bearing
5	Oil Sight-glass
6	Breather (M16 x 1.5)
8	Crankcase
7	Baseplate Seal
9	Baseplate
10	Screw & Spring Washer
11	Oil Plug (G1/8")
12	Crankshaft
13	Ball Bearing
14	Bearing Seat Gasket
15	Oil Seal
16	Bearing Seat
17	Spring Washer
18	Hex Screw
19	Flywheel
20	Flat Washer
21	Screw
22	Hex Screw
23	Cylinder Gasket
24	Cylinder
25	Valve Plate Gasket
26	Valve Plate
27	Copper Gasket
28	Valve Reed
29	Head Cover Gasket
30	Connector Nut

NO	DESCRIPTION
31	Aftercooler
32	Screw & Spring Washer
33	Aftercooler Gasket
34	Screw & Spring Washer
35	Head Cover
36	Air Filter
37	Hex Screw
38	Gudgeon Pin
39	Compression Ring
40	Oil Ring
41	Circlip
42	Piston
43	Connecting Rod
44	Motor Fixing Set
45	Motor
46	Motor Cable
47	Power Cable
48	Insulating sleeve
49	Pressure Control Switch
50	Plug
51	Pressure Gauge
52	Safety Valve
53	Connector
54	Ball Valve
55	Drain Valve
56	Reservoir
57	Exhaust pipe
58	Check Valve
59	Discharge pipe
60	Motor pulley

NO	DESCRIPTION
61	Key
62	V-belt
63	Flat washer
64	Screw
65	Screw & flat washer

NO	DESCRIPTION
66	Safety guard
67	Plastic Cowling
68	Bracket
69	Bracket Fixing Parts

SPECIFICATIONS

MODEL	Boxer 18/150V
Part Number	2245319
Motor Size	4 HP
Voltage	230 VAC (50Hz)
Total Wattage	3000W
Rated Current	17A
Air Displacement	500L/min (18 cfm)
Max Pressure	10 Bar (145 psi)
Receiver Capacity	150 L
Ingress Protection	IP20
Duty cycle	S3/50%
Oil Requirements	ISO100 (SAE46) compressor oil
Oil Capacity	0.75L
Dimensions (L x W x H)	520 x 580 x 1500 mm
Guaranteed Sound Power Level	97 dB(A)
Weight	89 kg

DECLARATION OF CONFORMITY - UK

**UK
CA**

**Clarke[®]
INTERNATIONAL**

DECLARATION OF CONFORMITY

This is an important document and should be retained.

We hereby declare that this product(s) complies with the following legislation:

2014/30/EU *Electromagnetic Compatibility Directive*

2006/42/EC *Machinery Directive*

2000/14/EC *Outdoor Noise Directive*

2014/68/EU *Pressure Equipment Directive*

2011/65/EU *Restriction of Hazardous Substances (RoHS) Directive*

2014/29/EU *Simple Pressure Vessels Directive*

The following standards have been applied to the product(s):

EN ISO 4126-1:2013+A1:2016, EN 62321-7-1:2015, EN 1012-1:2010, EN 62321-4:2014+A1:2017,

EN 62321-3-1:2014, EN 62321-7-2:2017, EN 62321-1:2013, EN 62321-2:2014, EN 62321-5:2014,

EN IEC 61000-6-1:2019, EN IEC 61000-6-3:2021, EN ISO 3744:2010, EN 62321-6:2015,

EN 60204-1:2018, EN 62321-8:2017, EN 286-1:1998+A2:2005

OUTDOOR NOISE

Notified Body:	Ente Certificazione Macchine (ID: 1282), Via Ca' Bella 243, Castello di Serravalle, 40053 Valsamoggia (BO), Italy
Assessment Procedure:	Annex VI of above noise legislation
Measured LWA:	95.1 dB
Guaranteed LWA:	97 dB

PRESSURE EQUIPMENT

Notified Body:	TUV Rheinland Bulgaria EOOD (ID: 1853), 36 Dragan Tsankov Boulevard, Block B, Floor 8, Office 801, 1040 Sofia, Bulgaria
Certificate Number:	1853-PED-20 0204
Assessment Category:	IV
Assessment Module(s):	B (Production Type)

SIMPLE PRESSURE VESSELS

Notified Body:	TUV SUD Industrie Service GmbH (ID: 0036), Westendstraße 199, 80686 München, Germany
Certificate Number:	12 202 240391252 002
Assessment Category:	N/A
Assessment Module(s):	C2

This declaration is issued, in accordance with (UK) legislation, under the sole responsibility of the manufacturer. The technical documentation required to demonstrate that the product(s) meet(s) the requirement(s) of the aforementioned legislation has been compiled and is available for inspection by the relevant enforcement authorities.

The UKCA mark was first applied in: 2025

Manufacturer:

Clarke International Ltd, Hemnell Street, Epping, Essex, CM16 4LG, United Kingdom

Alan Pond

Document Holder:

Product Description:

Air Compressor

Date of Issue:

07/01/2025

Model Number(s):

BOXER 18/150 V

Signed:



J.A Clarke

Director

Serial/Batch Number: Refer to product/packaging label

BOXER 18-150 V UKCA Clarke DOC 010725

Page 1 of 1

DECLARATION OF CONFORMITY - CE

CE

Clarke[®] INTERNATIONAL

DECLARATION OF CONFORMITY

This is an important document and should be retained.

We hereby declare that this product(s) complies with the following legislation:

2014/30/EU *Electromagnetic Compatibility Directive*

2006/42/EC *Machinery Directive*

2000/14/EC *Outdoor Noise Directive*

2014/68/EU *Pressure Equipment Directive*

2011/65/EU *Restriction of Hazardous Substances (RoHS) Directive*

2014/29/EU *Simple Pressure Vessels Directive*

The following standards have been applied to the product(s):

EN ISO 4126-1:2013+A1:2016, EN 62321-7-1:2015, EN 1012-1:2010, EN 62321-4:2014+A1:2017,

EN 62321-3-1:2014, EN 62321-7-2:2017, EN 62321-1:2013, EN 62321-2:2014, EN 62321-5:2014,

EN IEC 61000-6-1:2019, EN IEC 61000-6-3:2021, EN ISO 3744:2010, EN 62321-6:2015,

EN 60204-1:2018, EN 62321-8:2017, EN 286-1:1998+A2:2005

OUTDOOR NOISE

Notified Body: Ente Certificazione Macchine (ID: 1282), Via C.so Bella 243, Castello di Serravalle, 40053 Valsamoggia (BO), Italy

Assessment Procedure: Annex VI of above noise legislation

Measured LWA: 95.1 dB

Guaranteed LWA: 97 dB

PRESSURE EQUIPMENT

Notified Body: TÜV Rheinland Bulgaria EOOD (ID: 1853), 36 Dragana Tsankov Boulevard, Block B, Floor 8, Office 801, 1040 Sofia, Bulgaria

Certificate Number: 1853-PED-20 0204

Assessment Category: IV

Assessment Module(s): B (Production Type)

SIMPLE PRESSURE VESSELS

Notified Body: TÜV SÜD Industrie Service GmbH (ID: 0036), Westendstraße 199, 80686 München, Germany

Certificate Number: 12 202 240391252 002

Assessment Category: N/A

Assessment Module(s): C2

This declaration is issued, in accordance with (EU) legislation, under the sole responsibility of the manufacturer. The technical documentation required to demonstrate that the product(s) meet(s) the requirement(s) of the aforementioned legislation has been compiled and is available for inspection by the relevant enforcement authorities.

The CE mark was first applied in: 2025

Manufacturer:

Clarke International Ltd, Fitzwilliam Hall, Fitzwilliam Place, Dublin 2, Republic of Ireland

Alan Pond

Document Holder:

Product Description:

Air Compressor

Date of Issue:

07/01/2025

Model Number(s):

BOXER 18/150 V

Signed:

J.A Clarke

Director

Serial/Batch Number: Refer to product/packaging label

BOXER 18-150 V CE Clarke DOC 010725

Page 1 of 1

A SELECTION FROM THE VAST RANGE OF

Clarke®

QUALITY PRODUCTS



AIR COMPRESSORS

From DIY to industrial, Plus air tools, spray guns and accessories.

GENERATORS

Prime duty or emergency standby for business, home and leisure.

POWER WASHERS

Hot and cold, electric and engine driven - we have what you need

WELDERS

Mig, Arc, Tig and Spot. From DIY to auto/industrial.

METALWORKING

Drills, grinders and saws for DIY and professional use.

WOODWORKING

Saws, sanders, lathes, mortisers and dust extraction.

HYDRAULICS

Cranes, body repair kits, transmission jacks for all types of workshop use.

WATER PUMPS

Submersible, electric and engine driven for DIY, agriculture and industry.

POWERTOOLS

Angle grinders, cordless drill sets, saws and sanders.

STARTERS/CHARGERS

All sizes for car and commercial use.



PARTS & SERVICE:

0208 988 7400

Parts Enquiries

Parts@clarkeinternational.com

Servicing & Technical Enquiries

Service@clarkeinternational.com

SALES: UK 01992 565333 or Export 00 44 (0)1992 565335

Clarke® INTERNATIONAL Hemnall Street, Epping, Essex CM16 4LG
www.clarkeinternational.com